

PETITION TO THE  
DELTA SIGMA PHI FRATERNITY

We, the members of The Delta Sigma Phi Colony at California State Polytechnic College located in San Luis Obispo in the State of California do hereby petition

THE DELTA SIGMA PHI FRATERNITY

to become active members of said National Fraternity, and furthermore request authority to establish a Chapter thereof on this campus, subject to all rules, regulations, privileges and traditions common to the Fraternity.

We do therefore, individually and collectively pledge our loyalty, honor and utmost endeavors to the furtherance of the aims and ideals of The Delta Sigma Phi Fraternity, if granted this honor and privilege.

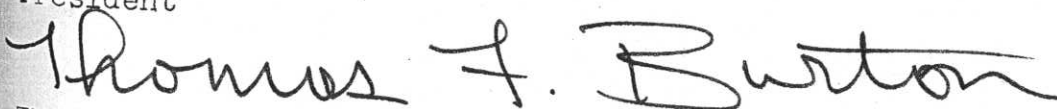
Submitted herewith is factual information concerning our college, our campus and our own organization.

Respectfully submitted,

DELTA SIGMA PHI COLONY  
CALIFORNIA STATE  
POLYTECHNIC COLLEGE



Kenneth G. Francis  
President



Thomas F. Burton  
Secretary

May, 1967  
1134 Palm Street  
San Luis Obispo, California  
U.S.A.

The Delta Sigma Phi Fraternity  
1134 Palm Street  
San Luis Obispo, California  
May, 1967

Gentlemen:

We the undersigned duly elected officers of the California State Polytechnic College Colony, whose signatures appear herein below, do hereby certify that the following resolution was regularly and duly passed at a meeting of our organization held on the 20th day of May, 1968, to wit:

WHEREAS, This organization, known and recognized as the Delta Sigma Phi Colony on the campus of California State Polytechnic College located at San Luis Obispo, California, is desirous of becoming a Chapter of the Delta Sigma Phi Fraternity, an international college social fraternity.

IT IS HEREBY RESOLVED, that the proper officers of this organization be and they are hereby authorized, empowered and directed to draw up and present to the proper authorities of the Delta Sigma Phi Fraternity, a formal petition for national recognition as a duly established Chapter of said Fraternity, subject and privileged to all its laws, rules, regulations, and traditions common to the Fraternity as a whole:

FURTHERMORE BE IT RESOLVED, that the officers of this organization, be and they are hereby authorized, empowered and directed to take such steps and make such expenditures for and in behalf of this organization, as may be required by the Delta Sigma Phi Fraternity, in order to acquire such recognition and authority as expressed herein above:

FURTHERMORE BE IT RESOLVED, that we individually and collectively, hereby pledge our loyalty, honor and utmost endeavors to the furtherance of the aims and ideals of the Delta Sigma Phi Fraternity, as evidence of our faith and sincere intentions.

IN WITNESS WHEREOF, we hereby affix our signatures.

DELTA SIGMA PHI COLLEGE  
CALIFORNIA STATE POLYTECHNIC COLLEGE

*Kenneth G. Francis*  
Kenneth G. Francis  
President

*Thomas F. Burton*  
Thomas F. Burton  
Secretary

## HISTORY OF CALIFORNIA STATE POLYTECHNIC COLLEGE

"Cal Poly" was founded on January 1, 1902, and was known as the California Polytechnic School. As stated in the founding act, "The purpose of the school is to furnish to young people of both sexes mental and manual training in the arts and sciences, including agriculture, mechanics, engineering, business methods, domestic economy, and such other branches as will fit the students for non-professional walks of life."

The first man to head the school, Mr. Leroy Anderson, (1902-1907), took office in June of 1902 and was instrumental in getting the school on its feet. Operations officially began at nine o'clock on the morning of October 1, 1903. Twenty students enrolled that first year. At that time, the school was not accredited by the University system for entrance; but the second head of the school, Robert Ryder, (1914-1921), took the necessary steps to have the school accredited by the University of California in 1917.

In 1927, junior college classes were added to transform the school to a six year institution of education. The man responsible for the expansion was President Benjamin Crandall (1924-1933). In 1929 the California Legislature passed a bill barring girls from attending the Polytechnic School.

In 1933, Julian McPhee took the office of President and was instrumental in gaining four year college level work in 1936 and the addition of the Bachelor of Science degree to the graduates of Spring, 1942.

In 1938, a second campus was donated to the school. To be known as the Kellogg-Voorhis Campus of the California Polytechnic School, the new campus was located in Pomona, east of Los Angeles, California.

It was not until 1947 that a bill was passed through the California State Legislature to change the official name of the school to California State Polytechnic College.

In 1946, Cal Poly was admitted to the California Collegiate Athletic Association, one of the strongest college division conferences in the nation. The eight-team conference includes Fresno State, Cal State at Los Angeles, Cal State at Long Beach, San Diego State, San Fernando Valley State, Cal Poly at Pomona, and Cal State at Fullerton.

Mustang athletic teams take part in CCAA play in the following varsity sports: football, cross-country, water polo, track, basketball, wrestling, swimming, gymnastics, baseball, golf, and tennis. Poly fielded an intercollegiate soccer team for the first time in the fall of 1967.

Cal Poly remained an all-male school until 1956, when girls were readmitted after some 27 years of classes without coeds.

Tragedy struck Cal Poly on October 29, 1960, when a chartered plane carrying the Poly football team home from Bowling Green, Ohio, crashed at the Toledo Airport. Twenty-two people were killed, including players, members of the band and others.

President Julian McPhee, President of the school from 1933, passed away in 1967. An interim president ruled until April, 1968, when President Robert Kennedy was inaugurated. The year 1967 also marked the separation of the two Poly campuses in San Luis Obispo and Pomona. Prior to 1967, the two schools were headed by one president, with an executive vice president at Pomona and one at San Luis Obispo.

Expansion and change have continued to be the keynotes on the campus in the past seven years. The campus, now expanded to 2,850 acres, has had the addition of numerous buildings, including residence halls, a college dining hall, the Men's Gymnasium, a greatly enlarged library, an additional engineering building,

and a new Administration building. Seen for the future and under construction presently are more residence halls, a computer science building, and a college union building.

## DEGREE PROGRAMS

California State Polytechnic College is comprised of five schools and offers a Bachelor of Science in each. The Schools are Agriculture, Engineering, Applied Arts, Applied Sciences, and Architecture.

Undergraduate degrees are offered in Agricultural Business Management, Agricultural Engineering, Animal Husbandry, Fruit Production, Crops Production, Dairy, Farm Management, Food Processing, Mechanized Agriculture, Natural Resources Management, Ornamental Horticulture, Poultry Industry, and Soil Science in the School of Agriculture.

Degrees are offered in the School of Engineering as follows: Aeronautical Engineering, Electrical Engineering, Electronic Engineering, Environmental Engineering, Industrial Engineering, Mechanical Engineering, Metallurgical Engineering, and Industrial Technology.

Degree programs in the School of Applied Arts are offered in the following majors: Business Administration, Child Development, English, Home Economics, Journalism, Physical Education, and Printing Technology and Management.

Applied Sciences degree programs are offered in Biochemistry, Biological Sciences, Chemistry, Mathematics, Physics, and Social Sciences.

The School of Architecture offers degrees in Architecture, Architectural Engineering, and City and Regional Planning.

## GRADUATE STUDY

Two Master's Degree programs are offered at Cal Poly: A Master of Science Degree, and a Master of Arts Degree.

The Master of Science Degrees are offered in Biological Sciences, Home Economics, Applied Mathematics, and Physical Education.

The Master of Arts Degrees are offered in Education, English and Mathematics.

## ACCREDITATION

California State Polytechnic College is fully approved as a four-year degree-granting institution by the Western Association of Schools and Colleges (formerly Western College Association). In addition the college holds associate membership in the Northwest Association of Secondary and Higher Schools.

## COLLEGES NEAREST TO CAL POLY

San Jose State College	San Jose, California
Fresno State College	Fresno, California
University of California	Santa Barbara, California

## STUDENT ENROLLMENT AT CALIFORNIA STATE POLYTECHNIC COLLEGE

Men - - 6833  
Women - 2750  
Total - 9583

## MEMBERSHIP IN SOCIAL FRATERNITIES

Active Members - 280  
Pledges- - - - - 81  
Total- - - - - 361

## CAL POLY ATHLETIC ACTIVITIES

The athletic program at Poly is conducted as an integral part of the educational program of the college. Intercollegiate competition plus a broad intramural program offers some form of recreational activity to appeal to the tastes of every student.

Intercollegiate competition is held under the rules and auspices of the National Collegiate Athletic Association. Conference competition is maintained in most sports as a member of the CCAA. A full program of intercollegiate competition is offered in all sports mentioned previously. Awards are given to letter winners.

The following are some of the colleges against which Poly competes during its regular seasons:

Iowa State University  
University of Wyoming  
Stanford University  
University of California at  
Berkeley  
Brigham Young University  
University of New Mexico  
San Francisco State  
Sacramento State

Cal Western  
Cal State Long Beach  
Cal State Los Angeles  
University of Santa Clara  
College of Southern Utah  
University of California  
at Irvine  
Westmont College  
Cal Poly Pomona

#### FRATERNITIES AT CAL POLY

##### NATIONAL

Alpha Epsilon Pi  
Delta Chi  
Phi Kappa Psi

##### LOCAL

Alpha Sigma  
Alpha Tau Omicron  
Alpha Upsilon  
Kappa Chi

#### SORORITIES AT CAL POLY

##### NATIONAL

None

##### LOCAL

Delta Chi Omega

#### HONORARY CLUBS AT CAL POLY

Alpha Phi Omega  
Alpha Psi Omega  
Alpha Zeta  
Blue Key  
Cardinal Key  
Circle K

Scabbard and Blade  
Pi Gamma Nu  
Phi Kappa Phi  
Sigma Delta Chi  
Scarab

## PROFESSIONAL SOCIETIES AT CAL POLY

American Chemical Society  
American Society of Agricultural Engineers  
American Society of Heating, Refrigeration, and Air Conditioning  
American Institute of Aeronautics and Astronautics  
American Institute of Architects  
American Institute of Physics  
American Society of Toll and Manufacturing Engineers  
American Welding Society and American Society of Metallurgy  
Capher  
Institute of Electrical and Electronics Engineers  
Student California Teachers Association  
Society for Advancement of Management  
Society of Automotive Engineers  
Soil Conservation Society



## HISTORY OF DELTA SIGMA PHI AT CAL POLY

Cal Poly Colony is the oldest of the Delta Sigma Phi colonies, having been founded in 1949. The nucleus of the colony was formed around the Cal Poly Penguins, an on campus club. Our first President was Donald F. Johnson.

In January of 1950, William S. Noblitt and Francis Wacker visited Cal Poly and conferred with the Student Faculty Committee on the question of Fraternities on campus. The charter members of the local received approval. Francis Wacker relates that it was a pleasant experience and recalls shouting back and forth with the committee members over the noise of shop machines where most of the interviews were held.

That same evening, William S. Noblitt and Francis Wacker visited the Cal Poly local. The local decided to go with Delta Sigma Phi, and has been a strong, solid operating group of men ever since, being the only local fraternity to withstand the rigors of the Korean War.

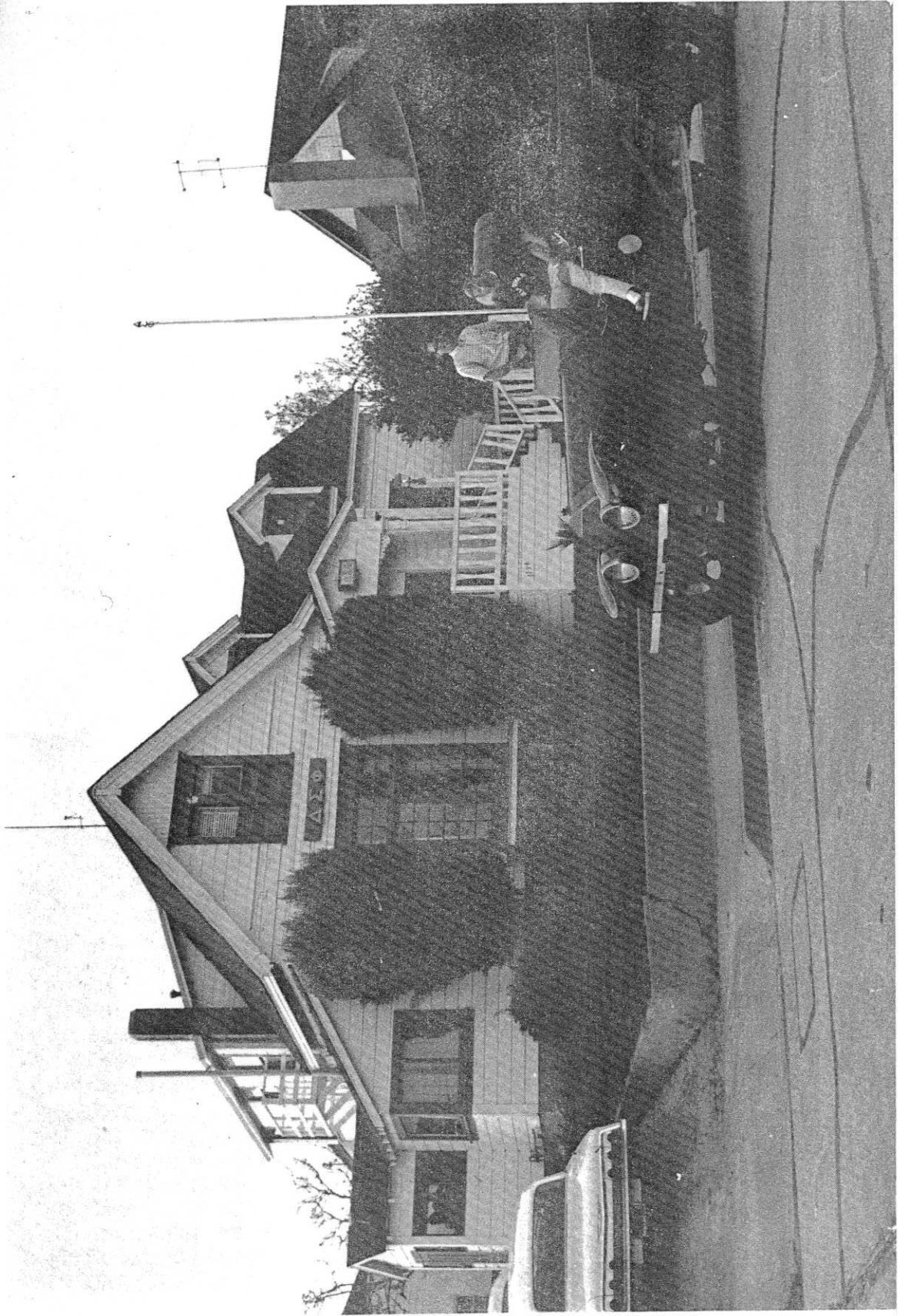
Follow up visits such as those in 1950 by William Noblitt, Francis Wacker and Frank Floyd, field representative, helped establish operation and rush techniques. And since, the Cal

Poly Colony has grown and prospered.

In 1953 our first house was destroyed by fire, but with the help of the community, Cal Poly, and the will to keep going, we somehow managed and in the same year we moved into our present house. As the Colony grew, other fraternities sprang up off campus, until there are now eight established Greek Fraternities in San Luis Obispo. Of these eight fraternities, four of them are national.

Over the years a misunderstanding with the school has existed concerning the permission to colonize. This was done because the President of the College was not directly involved with the approval of the Student Faculty Committee. Since then, other fraternities have been chartered and there is indication that the formal non-recognition policy toward fraternities may be changing. Delta Sigma Phi is currently spearheading the first attempt by social fraternities for recognition at Cal Poly.

Our greatest assets are diversity, participation and a strong Alumni Control Board. Delta Sigma Phi has been a leader among the Greeks on campus, in athletics and scholarship. This diversity has produced an outstanding group of nearly five hundred alumni, the heart of which is over the Alumni Control Board. Through their help and general assistance, the Delta Sigma Phi Active Colony has continued to survive and grow, and is planning to move into a new house in the near future. For such help and support we are greatly indebted.



OFFICERS OF THE CAL POLY COLONY  
DELTA SIGMA PHI

President	Kenneth G. Francis
Vice President	Gerald J. Irwin
Treasurer	Pandall S. Brame
Recording Secretary	Thomas W. Burton
Corresponding Secretary	James E. Canaday
Sargent-at-Arms	Donald Hordness
Pledgemaster	Aldon B. Campbell
Social Chairman	Stanley R. Lovelady
Athletics	Robert Schang
Alumni	Lawrence M. Annis
Blood	Drew E. Pringle
Chaplain	Loren G. Van Engen
Commissary	Charles G. Sommer, III
Constitution	Steven Yourth
Engineered Leadership	Dennis Maher
Historian	Dean V. Wolfe
Housing Manager	Stanley Carlson
IFC Representative	Loren Sutherland
Publicity	James J. Witmer
Scholarship	Larry W. Fritz
Songleader	Robert Dailey

PRESENT ACTIVE MEMBERSHIP

1. Annis, Larry	Pleasanton	4	Business
2. Bachelor, Dan	Los Altos	4	ME
3. Basch, Doug	Gilroy	4	ME
4. Bewsey, Mike	Laguna Beach	3	Crops
5. Blazick, Eugene	Walnut Creek	4	Arch. Eng
6. Brame, Randy	Denver, Colo.	4	Business
7. Brown, Burt	Altadena	2	ME
8. Burgess, Warren	West Covina	4	Business
9. Burror, James	Alameda	4	EE
10. Burton, Thomas	Van Nuys	3	ME
11. Campbell, Al	Napa	4	IT
12. Canaday, James	Coalinga	3	Business
13. Canby, Tim	Encino	3	ME
14. Carlson, Stan	McFarland	4	FM
15. Chambers, Craig	Bakersfield	4	Business
16. Clark, Bruce	Palmdale	4	Mech. Ag
17. Clark, Thomas	San Jose	4	Business
18. Croxton, Paul	Petaluma	4	IE
19. Cruz, Gilbert	Pleasanton	4	IE
20. Dailey, Robert	San Lorenzo	3	Soc. Sci.
21. Dickerson, Dennis	Bakersfield	4	Arch.
22. Duncan, Gary	Bakersfield	4	IT

23.	Eliel, John	Wisdom, Mont.	4	Math
24.	Francis, Kenneth	San Gabriel	4	Arch.
25.	Fritz, Larry	West Covina	4	Soc. Sci
26.	Ganick, Greg	Midway City	3	Crops
27.	Gillman, Russ	San Diego	2	Arch.
28.	Hageman, Randy	Crockett	4	Bio. Sci
29.	Heck, Phil	Ventura	4	IT
30.	Hordness, Donald	Los Altos	4	ABM
31.	Houser, James	S.L.O.	4	Business
32.	Irwin, Jerry	Davis	4	Bio. Sci
33.	James, Alan	Canoga Park	3	ME
34.	Johnston, Dave	Watsonville	3	Math
35.	Jones, Mike	Bakersfield	3	Business
36.	Kirby, Mike	Westchester	4	EL
37.	Koerper, Doug	Oakland	4	IT
38.	Koss, Joe	San Mateo	4	IE
39.	Laible, Dave	Redlands	4	Business
40.	Lovelady, Stan	Madera	4	Printing
41.	Maher, Dennis	San Jose	4	Business
42.	Meuer, David	Pac, Palisades	4	IT
43.	Owens, Tim	Bakersfield	4	Journ
44.	Pankey, James	Tustin	4	Mech. A
45.	Piers, John	Menlo Park	4	ABM
46.	Pringle, Drew	La Canada	3	Business
47.	Rasch, Fred	Riverside	3	Business
48.	Riddell, Steve	S.L.O.	4	Journ
50.	Roberts, Dennis	Grass Valley	4	Journ
51.	Root, Frank	S.L.O.	4	Refrigeration
52.	Seibly, Robb	Covina	4	EE
53.	Shang, Robert	Colusa	4	ME
54.	Sharp, Robert	Oceanside	4	Arch.
55.	Sommer, Charles	Caracus, Venez.	4	Math
56.	Spagnola, Carmen	Granada Hills	3	ME
57.	Stevenson, Ross	La Habra	4	ME
58.	Stuart, Robert	San Mateo	4	EE
59.	Sutherland, Loren	Sacramento	4	Business
60.	Swart, Ronald	Whitter	3	IT
61.	Tautrum, Mark	Santa Barbara	4	AI
62.	Van Engen, Loren	Redlands	4	Business
63.	Walker, David	Merced	4	ME
64.	Witmer, James	Newport Beach	4	Journ
65.	Wolfe, Dean	Orange	3	ME
66.	Wood, Chris	Altadena	4	ME
67.	Yourth, Steve	San Diego	4	ME
68.	Dias, Paul	Sunnyvale	4	Envir. En
69.	Thompson, Leif	Pac. Palisades	3	Arch.
70.	Crandel, Barry	Pac. Palisades	3	Arch.
71.	Rogers, Larry	Camarillo	3	Poultry
72.	Baker, Dennis	Northridge	3	Poultry
73.	Morgan, Todd	Livermore	3	ABM
74.	Quandt, David	Montclair	3	Business
75.	Roth, Alan	Fremont	2	EE
76.	Williams, David	S.L.O.	2	EE
77.	Lane, Steven	Haywood	2	ME
78.	Emerson, Bill	Sacramento	3	ME
79.	Pederson, Perry	S.L.O.	3	Business

WINTER 1969 PLEDGE CLASS

1.	Alexander, Bob	Walnut Creek	2	EE
2.	Clark, Tom	Stockton	3	ABM
3.	Hart, Brian	Sacramento	2	Arch
4.	Herbst, Greg	Hilo, Hawaii	3	ABM
5.	Leffler, Bill	Burney	3	Arch
6.	Moriarty, Brian	S.L.O.	4	PE
7.	Schwartz, Randy	San Jose	3	Chem
8.	Spanos, Greg	Stockton	2	Aero
9.	Stevenson, Doug	Modesto	3	Arch
10.	Wattenbarger, Doug	Bakersfield	1	AH
11.	Whipkey, Fred	Stockton	3	Math
12.	White, Kip	Santa Barbara	3	EL

CALIFORNIA STATE POLYTECHNIC  
COLLEGE

San Luis Obispo, California

April 29, 1968

National Office  
Delta Sigma Phi Fraternity  
c/o Delta Sigma Phi Colony  
1134 Palm Street  
San Luis Obispo, California 93401

Gentlemen:

Members of the local colony of the Delta Sigma Phi have inquired whether or not the college would object to the colony acquiring Chapter status within the fraternity.

As you may know, the college does not recognize social fraternities at the present time. Consequently the college would not have any objections to the change of status from colony to chapter.

Even though the college has not recognized social fraternities, the relationship between the students in the Delta Sigma Phi Colony and the college as been amiable.

Sincerely yours,



Everett M. Chandler  
Dean of Students

71 N. Broad Street  
San Luis Obispo, California  
May 7, 1968

Mr. Francis Wacker  
Executive Secretary  
Delta Sigma Phi Fraternity  
1445 Steele Street  
Denver 6, Colorado

Dear Mr. Wacker:

I was very pleased when I heard that the Delta Sigma Phi Colony of California State Polytechnic College was applying for their charter.

As president of the Inter Fraternity Council here at Cal Poly, I would like to express to you my sincere recommendation that the colony be awarded their charter. This Delta Sigma Phi Colony has been an integral part of Inter Fraternity Council at Cal Poly since its origin. During my past year as president, the men of Delta Sigma Phi have always been ready to assist Inter Fraternity Council in any possible. They have numerous student leaders, in both our Inter Fraternity Council and our college. I would again like to emphasize to you that I would very much like to see the Delta Sigma Phi Colony at Cal Poly be awarded its charter.

Very truly yours,

*Richard Carl Johns*

Richard Carl Johns  
President, Inter Fraternity Council  
California State Polytechnic College



ALPHA EPSILON PI FRATERNITY  
SIGMA OMEGA COLONY  
743 BUCHON ST.  
SAN LUIS OBISPO  
CALIFORNIA

Mr. Francis Wacker  
Executive Secretary  
Delta Sigma Phi International Fraternity  
1445 Steele St.  
Denver, Colorado

Dear Sir:

MAY 1, 1968

We of the Alpha Epsilon Pi Fraternity, Sigma Omega Colony, recommend to you, the Colony of Delta Sigma Phi Fraternity at California Poly-Technic College, for installation as a chapter in Delta Sigma Phi.

Sincerely,

*Lionel Socol*

Lionel Socol, MASTER

71 N. Broad Street  
San Luis Obispo, Calif.  
May 6, 1968

Mr. Francis Wacker  
Executive Secretary  
Delta Sigma Phi Fraternity  
1445 Steele Street  
Denver 6, Colorado

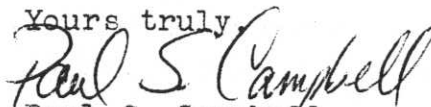
Dear Mr. Wacker:

When I first heard that Delta Sigma Phi Fraternity here at Cal Poly was applying for their charter I was very excited for them. My fraternity, Delta Chi, is also a colony so I believe that I can fully appreciate the importance of Chartering.

Delta Sigma Phi has been a strong and competitive fraternity for the three years that I have been here at school. From their present appearance, I would say that they will continue in the future as one of the strongest houses here at Cal Poly. The men of Delta Sigma Phi are very active on campus, they participate in student government and numerous other organizations. They provide many leaders for the I.F.C., and they support it actively.

In my opinion, the Delta Sigma Phi Colony at Cal Poly is a strong fraternity and very worthy of the honor of chartering. I'm sure that they can handle the responsibility and would be of credit to their National Fraternity.

Yours truly,



Paul S. Campbell  
President, Delta Chi Colony



PHI KAPPA PSI FRATERNITY

California Eta

CALIFORNIA STATE POLYTECHNIC COLLEGE

1303 GARDEN STREET • SAN LUIS OBISPO, CALIFORNIA 93401 • 805/543-9652

May 21, 1968

Mr. Francis Wacker  
Executive Secretary  
Delta Sigma Phi International Fraternity

Dear Mr Wacker:

This letter is in regards to your Cal Poly Colony of Delta Sigma Phi Fraternity and their efforts to become a chartered chapter in your organization. As president of the California Eta Chapter of Phi Kappa Psi Fraternity, I would like to express our support for their efforts.

We, ourselves, are a new Chapter having received our charter in April of 1966. We are, therefore, anxious to see other fraternities join us in these ranks. It is therefore understandable why we are especially interested in the possibility that your Colony may soon be afforded that opportunity.

The feelings between the two brotherhoods at Cal Poly have always been those of a cordial friendship and respect. The men of Delta Sigma Phi have repeatedly demonstrated to us leadership and a willingness to serve, on campus, in the community, and in inter-fraternity activities.

Therefore, on behalf of my Brothers, I would like to extend a hearty recommendation that they be granted their charter.

Sincerely,

*David R. Woodrell*

David R. Woodrell, President  
California Eta Chapter  
Phi Kappa Psi Fraternity



## ALPHA SIGMA

---

1681 PHILLIPS LANE  
SAN LUIS OBISPO, CALIFORNIA

May 4, 1968

Mr. Francis Wacker  
National Secretary  
Delta Sigma Phi Fraternity International  
1445 Steele Street  
Denver, Colorado

Dear Mr. Wacker;

It is with great pleasure that I am writing this letter for Delta Sigma Phi Fraternity at California State Polytechnic College, San Luis Obispo, California.

Since our founding in 1957, Alpha Sigma Society has had very good relations both with the fraternity as a whole and with the individual members. Through Inter-Fraternity Council we have had very excellent experiences of social exchanges, competitive sports, and other Greek activities. From these activities we feel that our relationship with Delta Sigma Phi has been one of cooperation and one of striving to improve the Brotherhood and cause of fraternities here at Cal Poly.

In short, it is my opinion and the Brothers of Alpha Sigma Society that Delta Sigma Phi would be a valuable gain to the National Chapter of Delta Sigma Phi Fraternity International.

Fraternally yours,

*William R. Cummings*

William R. Cummings  
President  
Alpha Sigma Society

April 24, 1968

Mr. Francis Wacker  
Executive Secretary  
Delta Sigma Phi Fraternity  
1445 Steele Street  
Denver 6, Colorado

Dear Sir:

I can honestly say that it is with great pleasure that I recommend Delta Sigma Phi of Cal Poly for acceptance as a National Chapter.

Our House has had nothing but good relations with DSP. They are a pleasure to work with and a king pin in our local Inter Fraternity Council. They are also very active in school affairs ranging from R.O.T.C. cadet officers to Service Committees.

Once again, I say it is my pleasure to write this letter.

Very sincerely yours,



Robert J. Mazzuca, President  
Alpha Upsilon Fraternity  
California State Polytechnic College  
San Luis Obispo, California



## Kappa Chi Fraternity

CALIFORNIA STATE POLYTECHNIC COLLEGE

Monday 3ird June '68

Mr. Francis Wacker  
Executive Secretary  
Delta Sigma Phi International Fraternity  
1445 Steele Street  
Denver, Colorado.

Dear Sir,

On behalf of the brothers of Kappa Chi I am writing a letter of recommendation to you for the Delta Sigma Phi Fraternity here at Cal Poly.

There are seven members of Inter-Fraternity Council here at Cal Poly and D.S.P. is very active in its activities and cooperates very well with the organization.

Through the year I.F.C. has many functions. Charity wise includes a mental Health Drive and Blood Donations. In sports I.F.C. conducts competitions in all areas, finally in social events there are many inter-fraternity get togethers, parties and T.G.I.F.s. However of these the largest is our Greek Week weekend which is devoted to inter-fraternity competitions.

In all of these events D.S.P. does very well and is often around the top with results.

At the present time they are paving the way for I.F.C. to become reconized on Campus.

Yours Sincerely

President Kappa Chi

*A. William Wessel*

Corresponding Secretary

*Dion W. Ross.*

Credit is due to the following people, those responsible for this petition:

Lawrence Annis  
Ronald Blickle  
Steven Hubbard  
Ross Stevenson  
Donald Hordness

Loren Van Engen  
Gene Blazick  
Ken Francis  
Larry Fritz  
Duane Paul

It is effort, such as made by these men, that has made Delta Sigma Phi Cal Poly Colony a proud and sustaining organization.

# Songs of the Delta Sigma Phi Fraternity

## 'Grace'

For food, for fellowship,  
For our fraternity,  
We give this Thanks to Thee,  
Amen, Amen.

## 'The Bond of Sphinx'

Let us as true brothers gather  
In the bonds of silent sphinx  
Arm in arm held close together  
By unparting ceaseless links  
Hidden echoes seize our song  
And bear it upwards, far and high  
Till at last the heavens  
Ring out for Dear Old  
Delta Sigma Phi.

## 'Here's to Delta Sigma Phi'

Oh here's to Delta Sigma Phi  
Let us raise a cheer  
Delta Sig's every way hold  
Their honor dear.  
So drink to our fraternity  
Raise your glass on high  
There is no band in all the land  
Like Delta Sigma Phi.

## 'Old Delta Sigma Phi'

Old Delta Sigma Phi, we sing to thee,  
Fairest Fraternity, give her three times three,  
Rah! Rah! Rah!  
Long may we cherish thee,  
Faithful we'll be.  
Old Delta Sigma Phi for you and me.

## 'Emblem of the Delta Sigma Phi'

Oh, a man may be a very good man,  
A very good man may be,  
But a better man he's sure to become  
When he joins a fraternity,  
He may pass the test of the second best,  
But the man who's best says, I, I, I,  
Is the man who wears upon his chest  
The emblem of the Delta Sigma Phi,  
Boom, boom, boom, the emblem of the Delta Sigma Phi  
Boom, boom, boom, the emblem of the Delta Sigma Phi

*Welcome to the Installation of the Cal Poly Colony as a Chapter  
in the Delta Sigma Phi International Fraternity*

## Program for Saturday, April 26, 1969

5:00 P.M.	Formal Installation of the Chapter	
6:00 P.M.	Social Hour at the Chapter House	
7:30 P.M.	Installation Banquet at the Madonna Inn	
Master of Ceremonies	.....	Charles G. Sommers III
Invocation	.....	Loren Van Engen
"Grace"	.....	Chapter Members
Dinner		
"Bond of Sphinx"	.....	Chapter Members
"Here's to Delta Sigma Phi"	.....	Chapter Members
Introductions	.....	Charles G. Sommer
Chapter Officers		
Distinguished Guests and Alumni		
National Assistant Editor, Chandler Harris		
District Governor pro-tem, William S. Noblitt		
National Executive Secretary, Francis Wacker		
Address	.....	Russell T. Roebuck, National President
Preamble	.....	Chapter Members
"Oh Delta Sigma Phi"	.....	Chapter Members
"Emblem of Delta Sigma Phi"	.....	Chapter Members
Closing Remarks	.....	Charles G. Sommer